



Dictation Algorithms



Dictation Algorithms

The following algorithms have been created to highlight the nomenclature necessary to avoid queries.

Diagnoses:

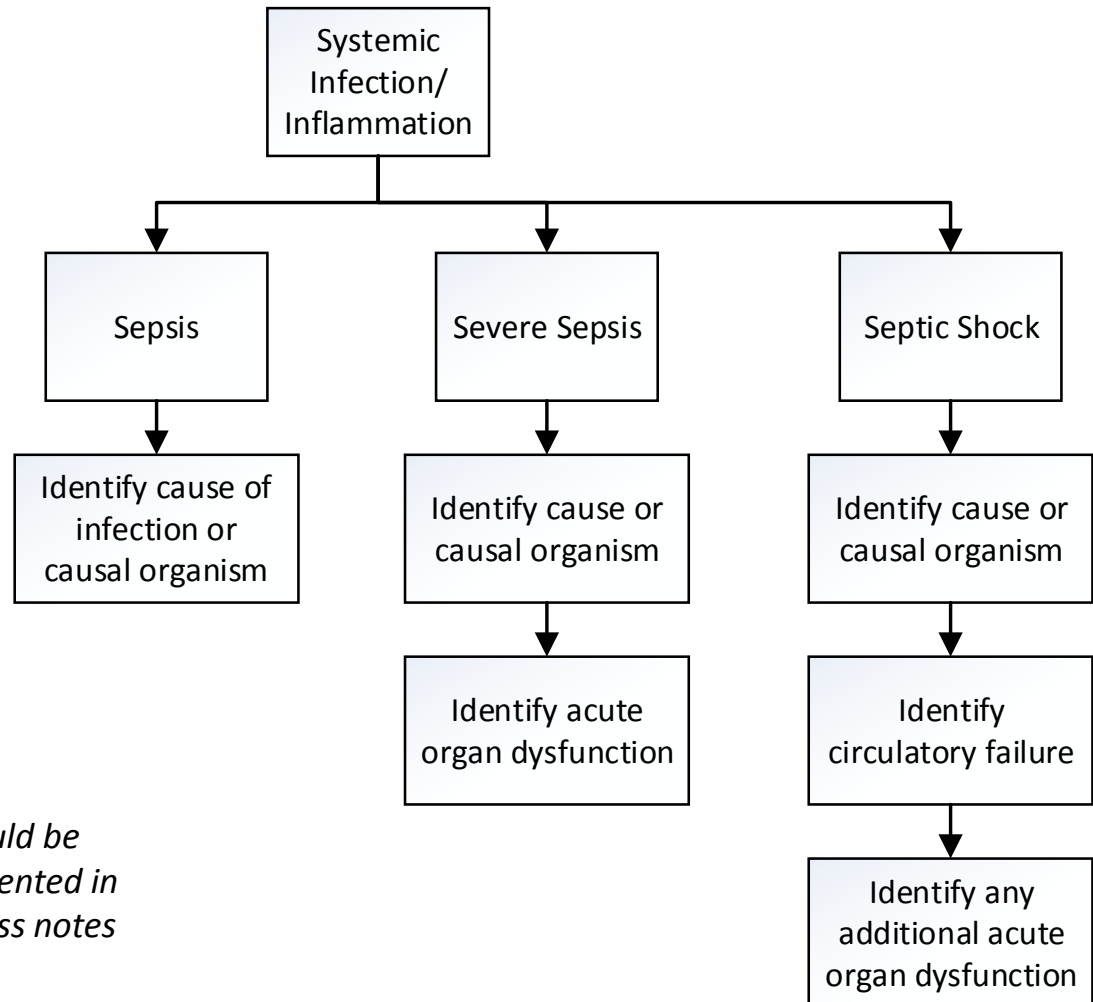
Anemia	Diabetes	Pregnancy
Appendicitis	Fractures	Pregnancy Hypertension
Asthma	Heart Failure	Pressure Ulcers
Blood Transfusion	Myocardial Infarction	Respiratory Failure
Cerebral Vascular Accident	Neoplasms	Systemic Infection
Chronic Kidney Disease	Otitis Media	Spinal Fusion
COPD	Pneumonia	



Systemic Infection Dictation Algorithm

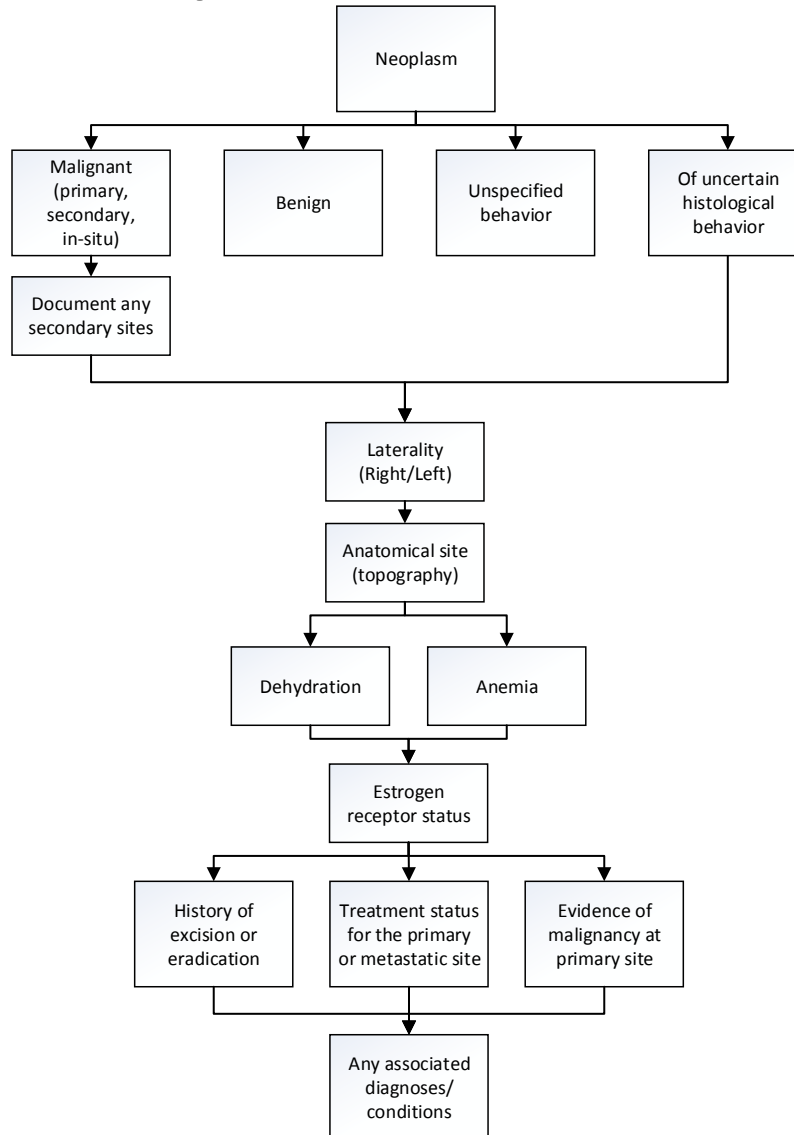
ICD-10 Hint:

- C** Document **causal** agents as clearly as possible
- A** Document the condition as **acute** or chronic
- L** Document **location** with as much specificity as possible
- C** Document the **clinical findings/** indicators to support the diagnosis documented
- S** Document related, **secondary** or causal illness whenever appropriate





Neoplasms Dictation Algorithm



ICD-10 Hint:

- C** Document **causal** agents as clearly as possible
- A** Document the condition as **acute** or chronic
- L** Document **location** with as much specificity as possible
- C** Document the **clinical findings/** indicators to support the diagnosis documented
- S** Document related, **secondary** or causal illness whenever appropriate

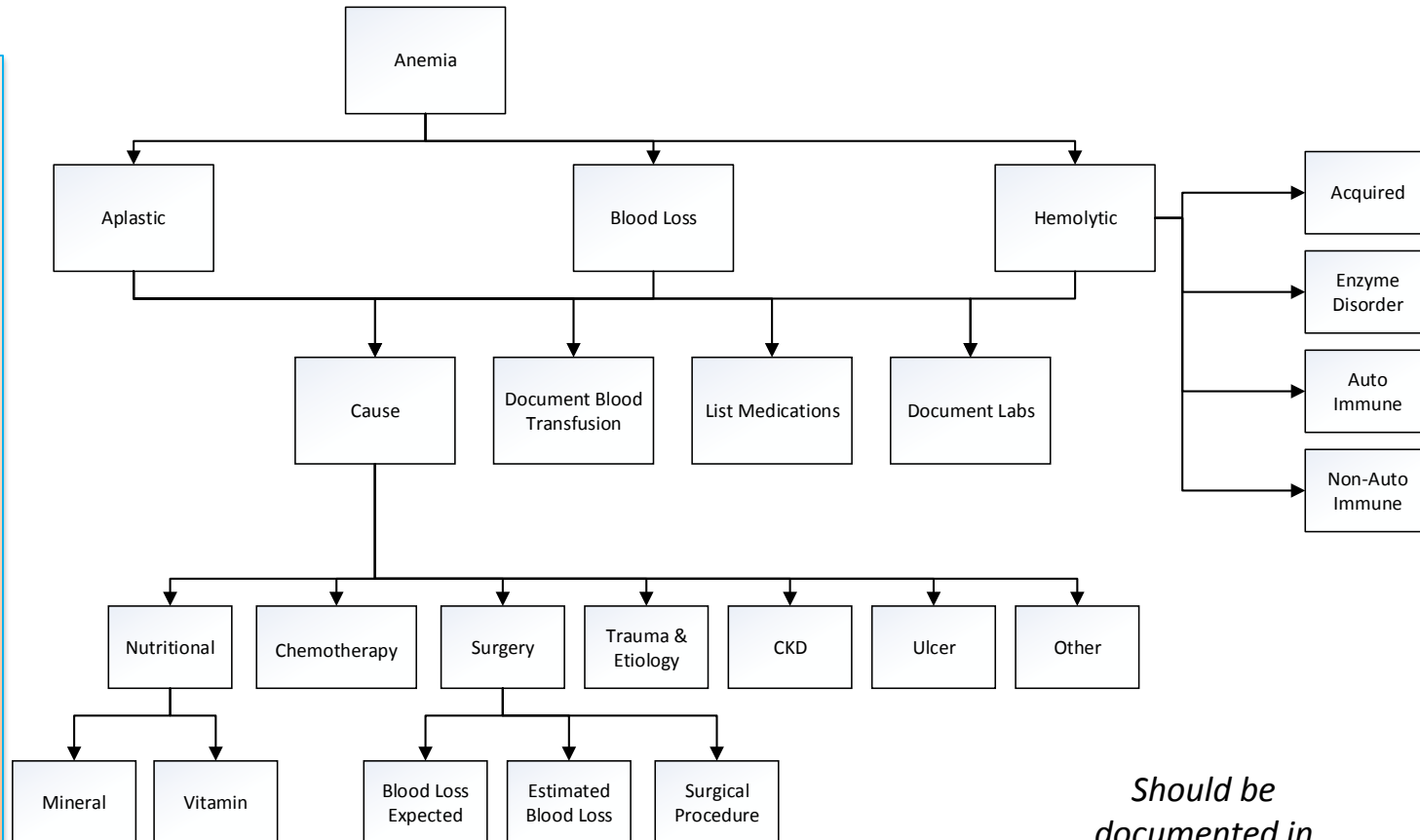
Should be documented in progress notes



Anemia Dictation Algorithm

ICD-10 Hint:

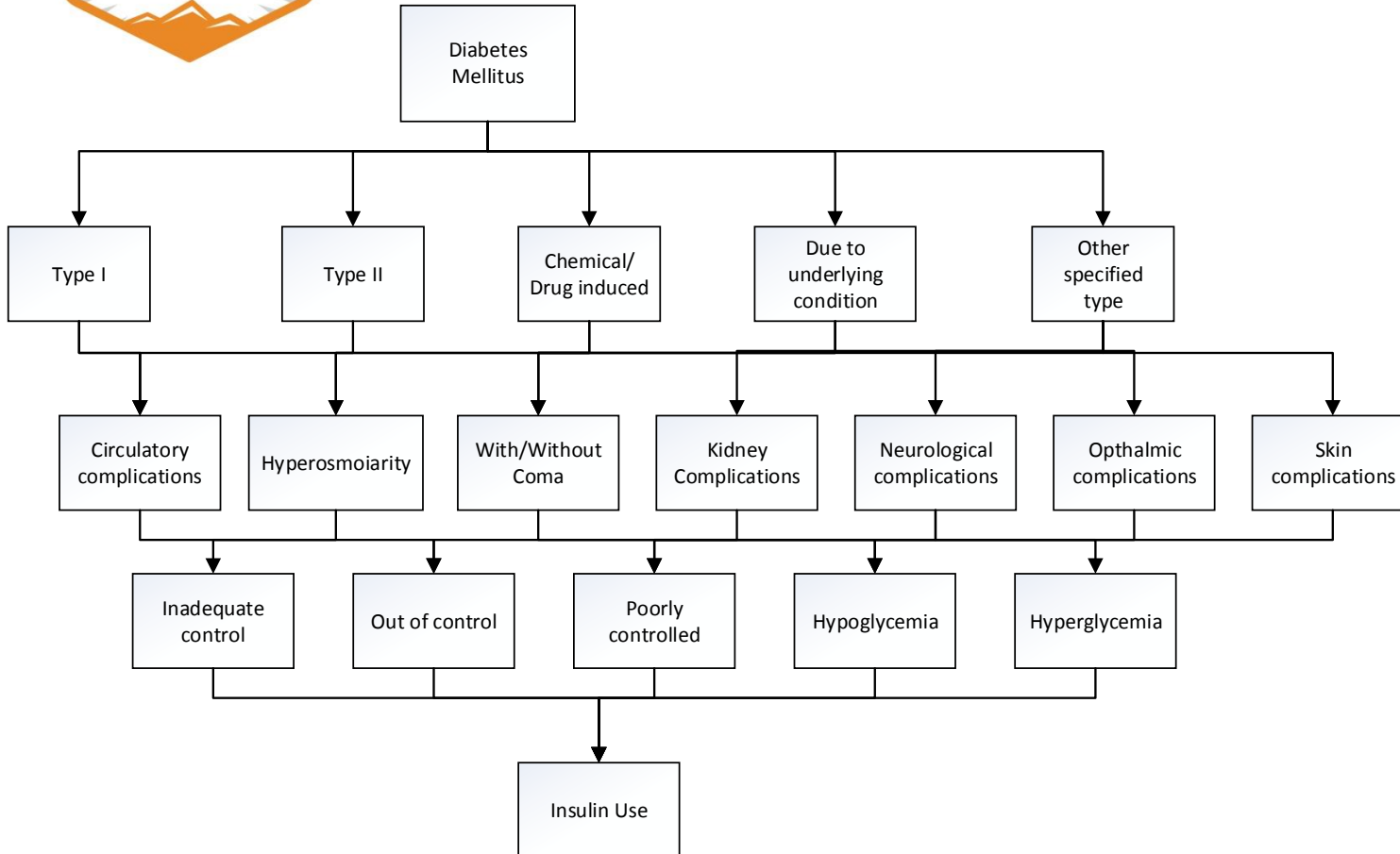
- C** Document **causal** agents as clearly as possible
- A** Document the condition as **acute** or chronic
- L** Document **location** with as much specificity as possible
- C** Document the **clinical findings/** indicators to support the diagnosis documented
- S** Document related, **secondary** or causal illness whenever appropriate



Should be documented in progress notes



Diabetes Dictation Algorithm



ICD-10 Hint:

- C** Document **causal** agents as clearly as possible
- A** Document the condition as **acute** or **chronic**
- L** Document **location** with as much specificity as possible
- C** Document the **clinical findings/** indicators to support the diagnosis documented
- S** Document related, **secondary** or **causal** illness whenever appropriate

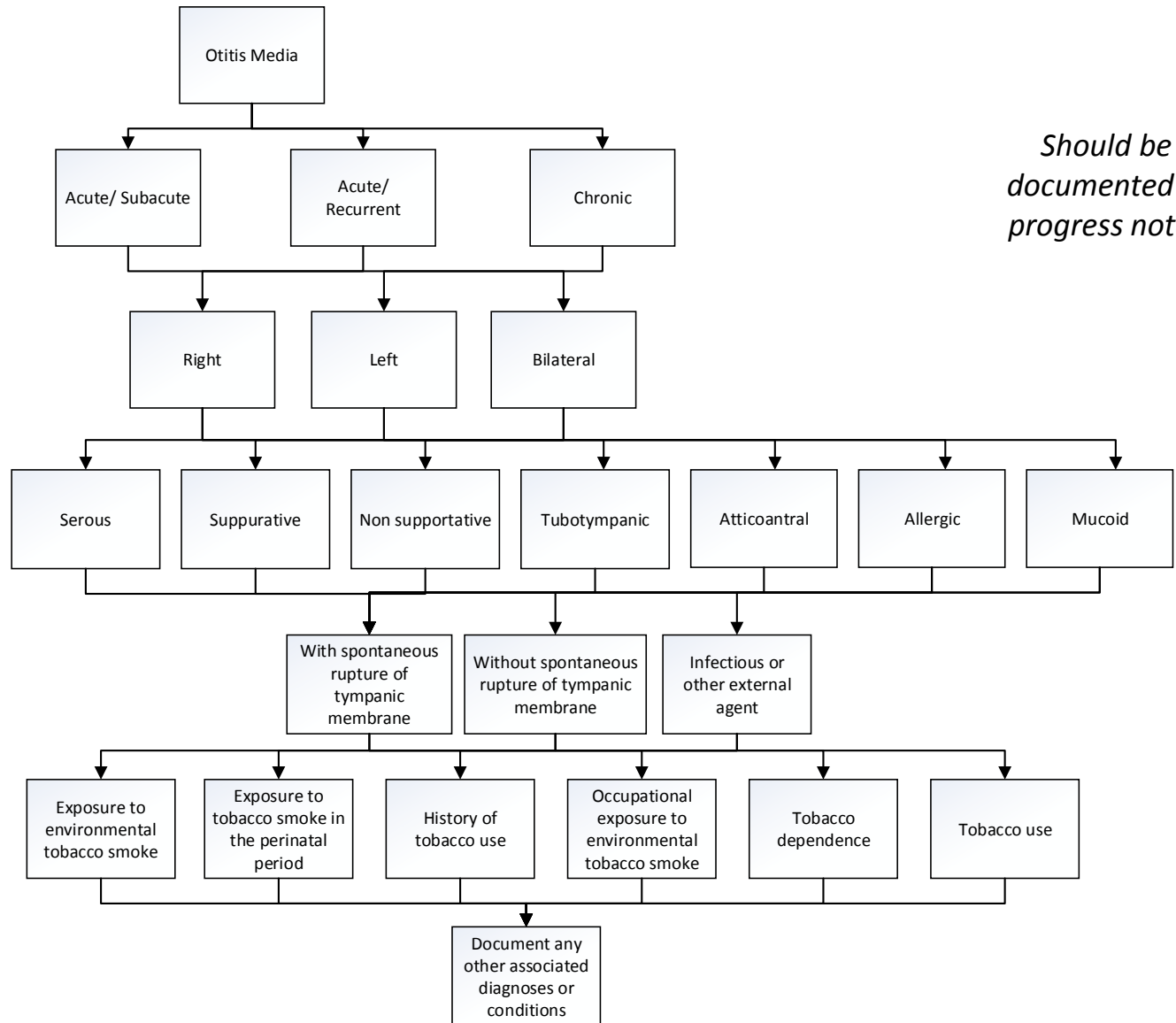
Should be documented in progress notes



Otitis Media Dictation Algorithm

ICD-10 Hint:

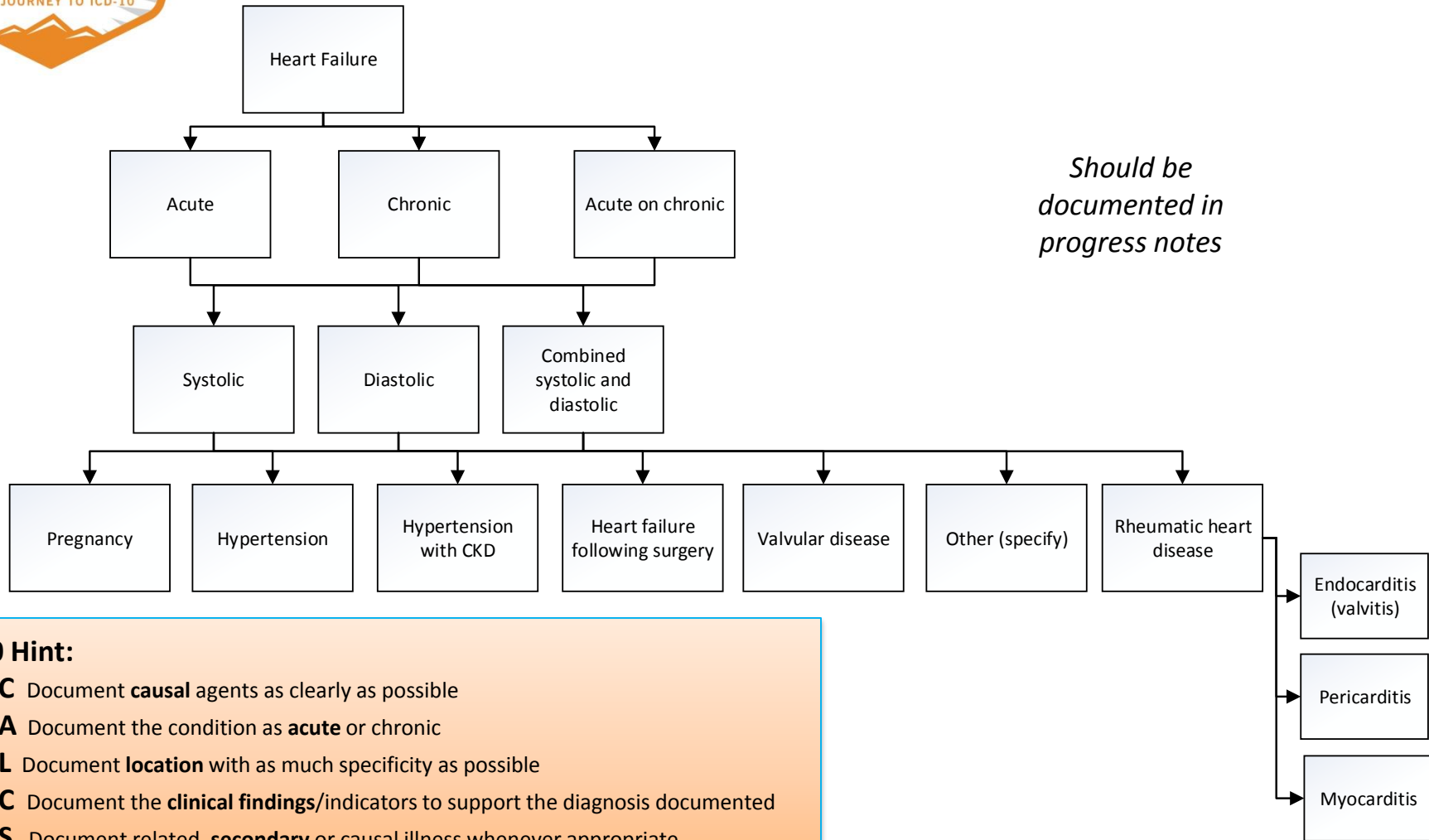
- C** Document **causal** agents as clearly as possible
- A** Document the condition as **acute** or **chronic**
- L** Document **location** with as much specificity as possible
- C** Document the **clinical findings/** indicators to support the diagnosis documented
- S** Document related, **secondary** or causal illness whenever appropriate



Should be documented in progress notes



Heart Failure Dictation Algorithm

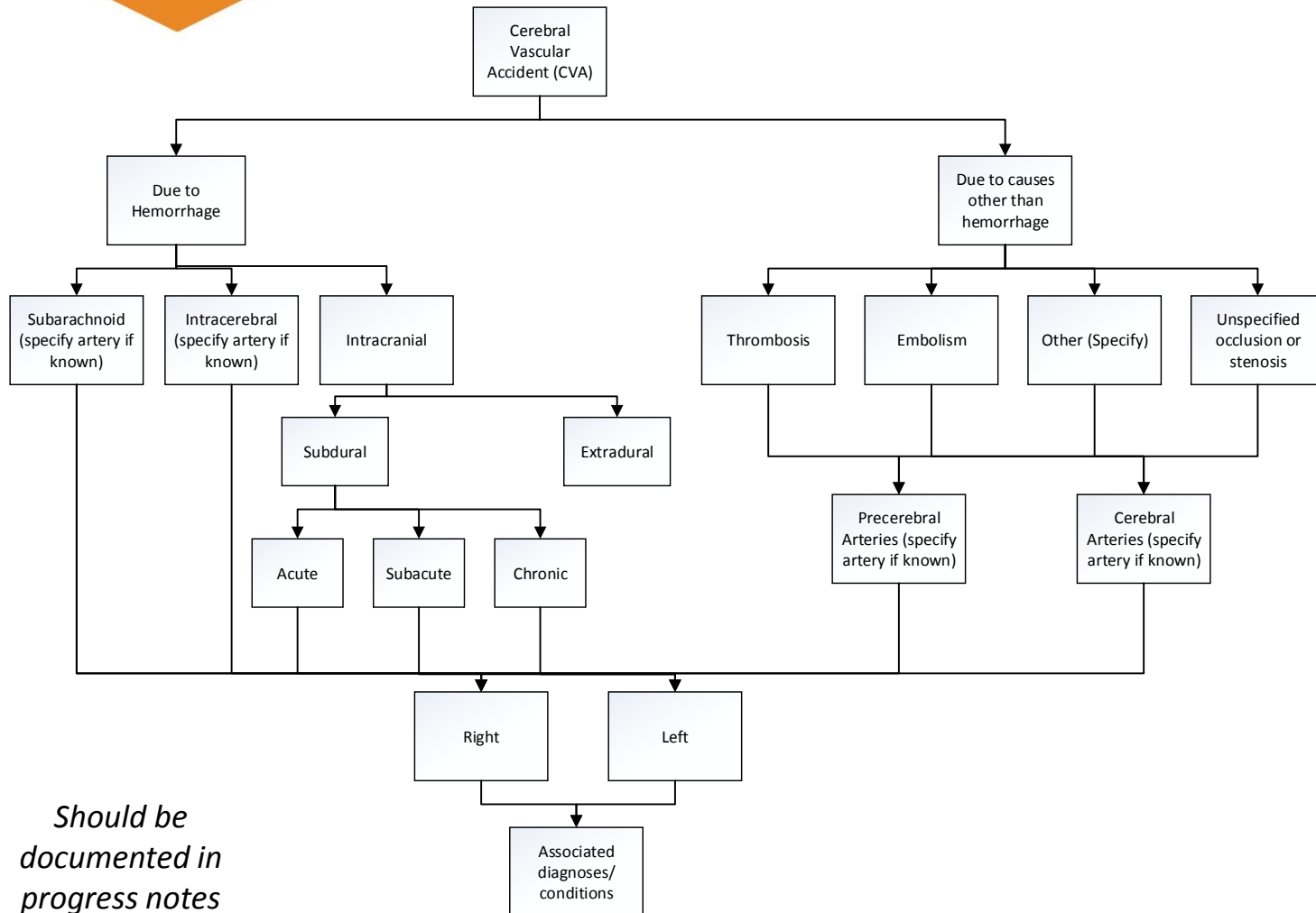


ICD-10 Hint:

- C** Document **causal** agents as clearly as possible
- A** Document the condition as **acute** or chronic
- L** Document **location** with as much specificity as possible
- C** Document the **clinical findings**/indicators to support the diagnosis documented
- S** Document related, **secondary** or causal illness whenever appropriate



Cerebral Vascular Accident (CVA) Dictation Algorithm



Should be documented in progress notes

ICD-10 Hint:

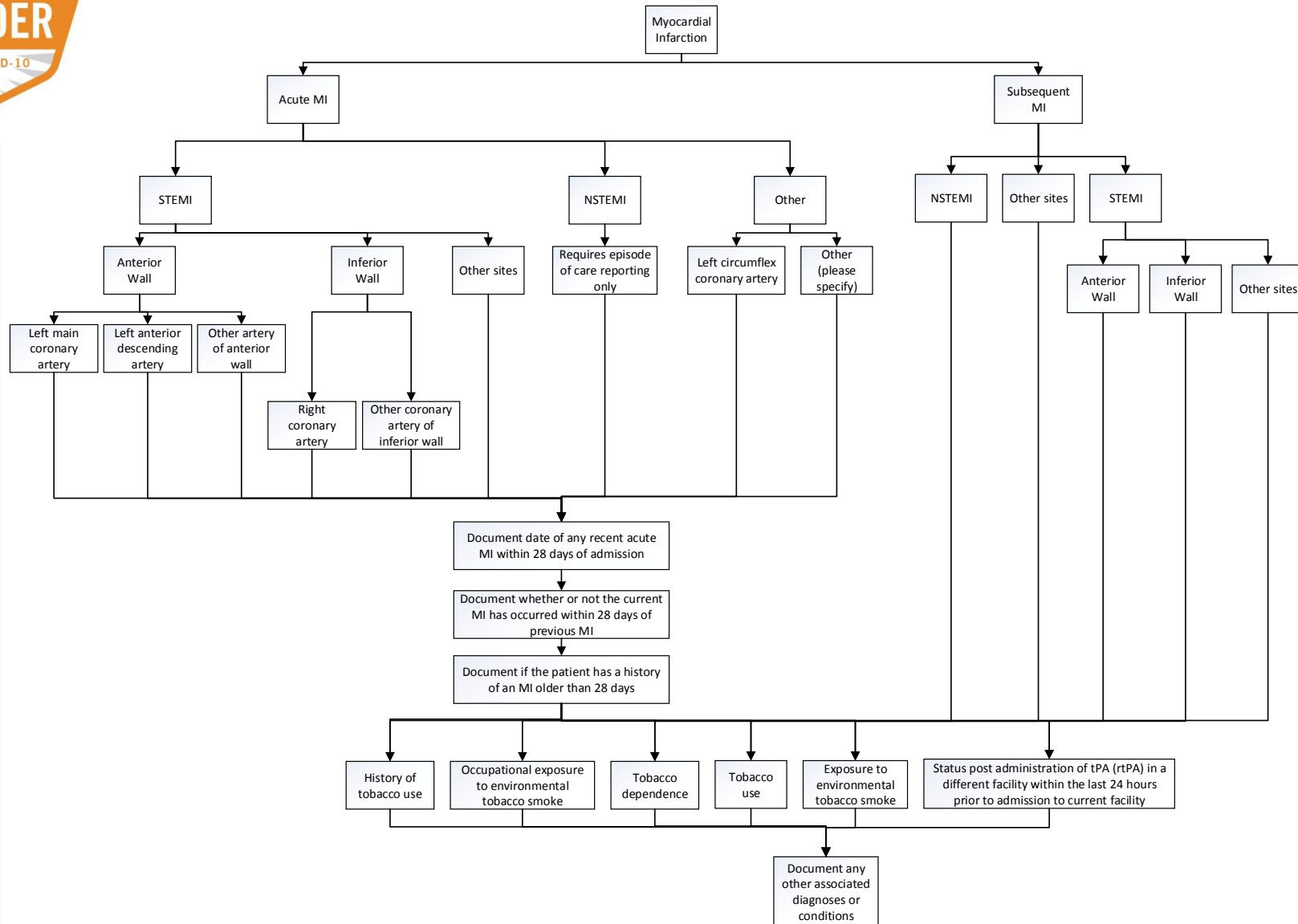
- C** Document **causal** agents as clearly as possible
- A** Document the condition as **acute** or **chronic**
- L** Document **location** with as much specificity as possible
- C** Document the **clinical findings/** indicators to support the diagnosis documented
- S** Document related, **secondary** or causal illness whenever appropriate



Myocardial Infarction Dictation Algorithm

ICD-10 Hint:

- C** Document **causal agents** as clearly as possible
- A** Document the condition as **acute** or chronic
- L** Document **location** with as much specificity as possible
- C** Document the **clinical findings/ indicators** to support the diagnosis documented
- S** Document related, **secondary** or causal illness whenever appropriate

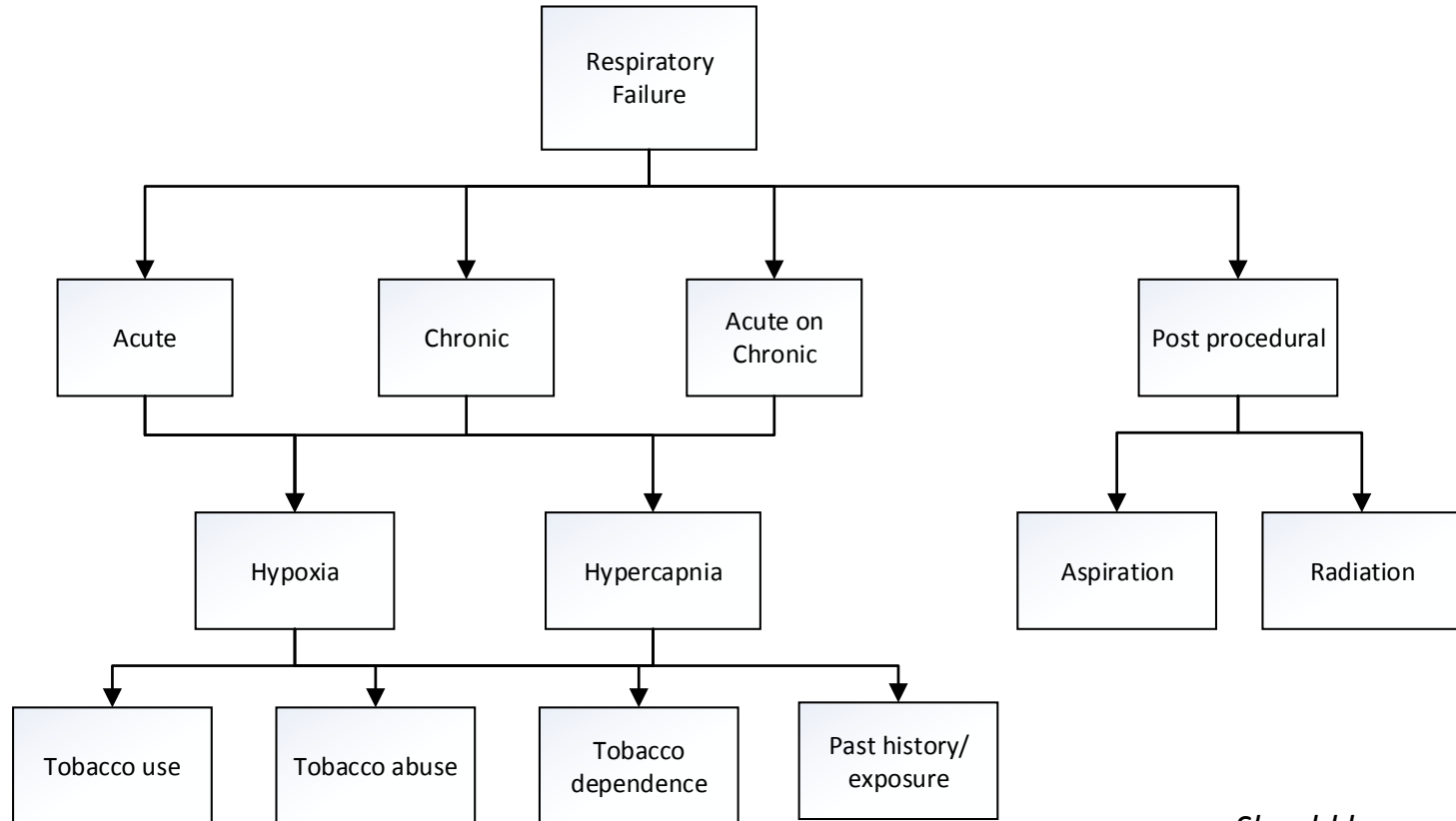




Respiratory Failure Dictation Algorithm

ICD-10 Hint:

- C** Document **causal** agents as clearly as possible
- A** Document the condition as **acute** or chronic
- L** Document **location** with as much specificity as possible
- C** Document the **clinical findings/** indicators to support the diagnosis documented
- S** Document related, **secondary** or causal illness whenever appropriate



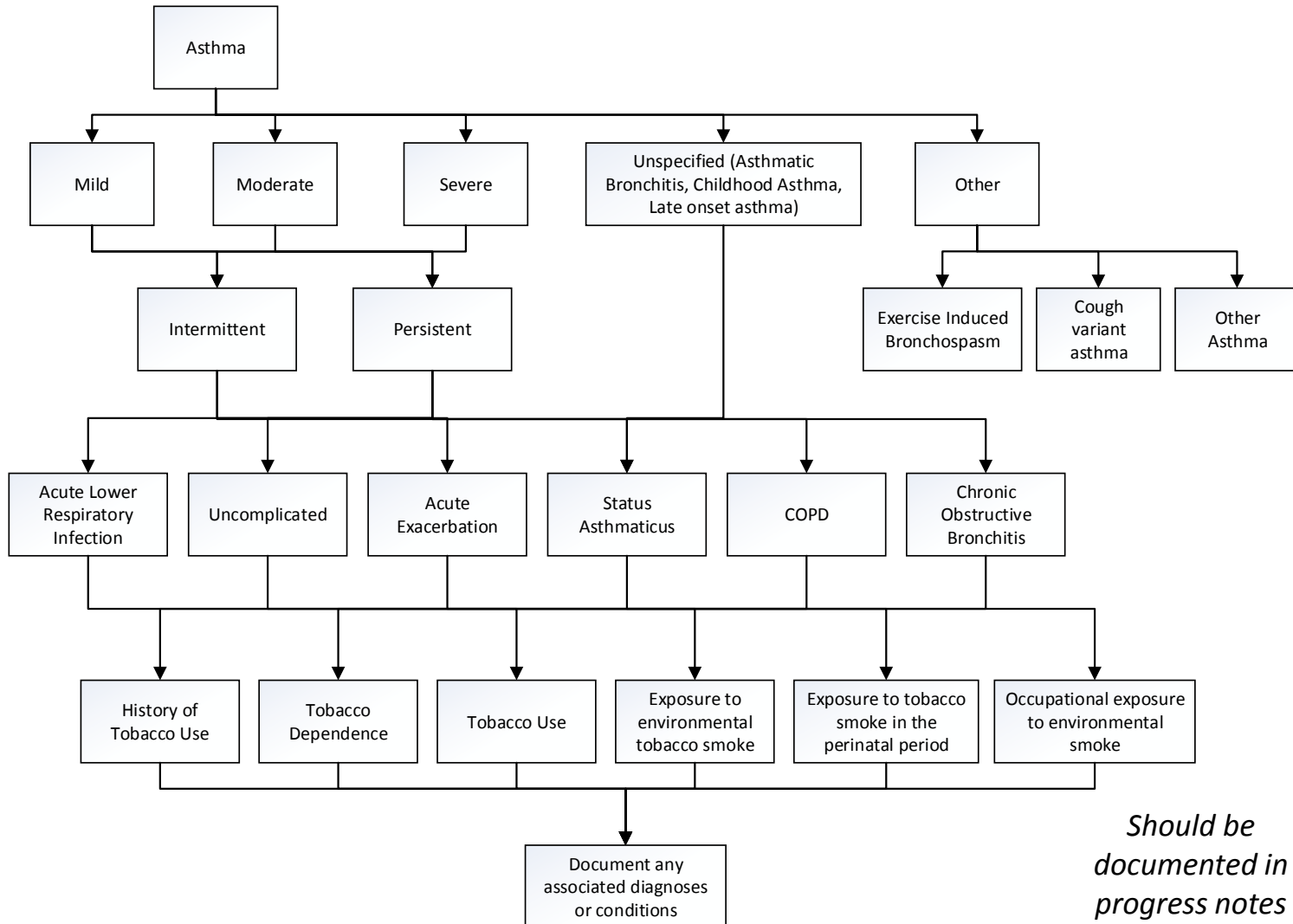
Should be documented in progress notes



Asthma Dictation Algorithm

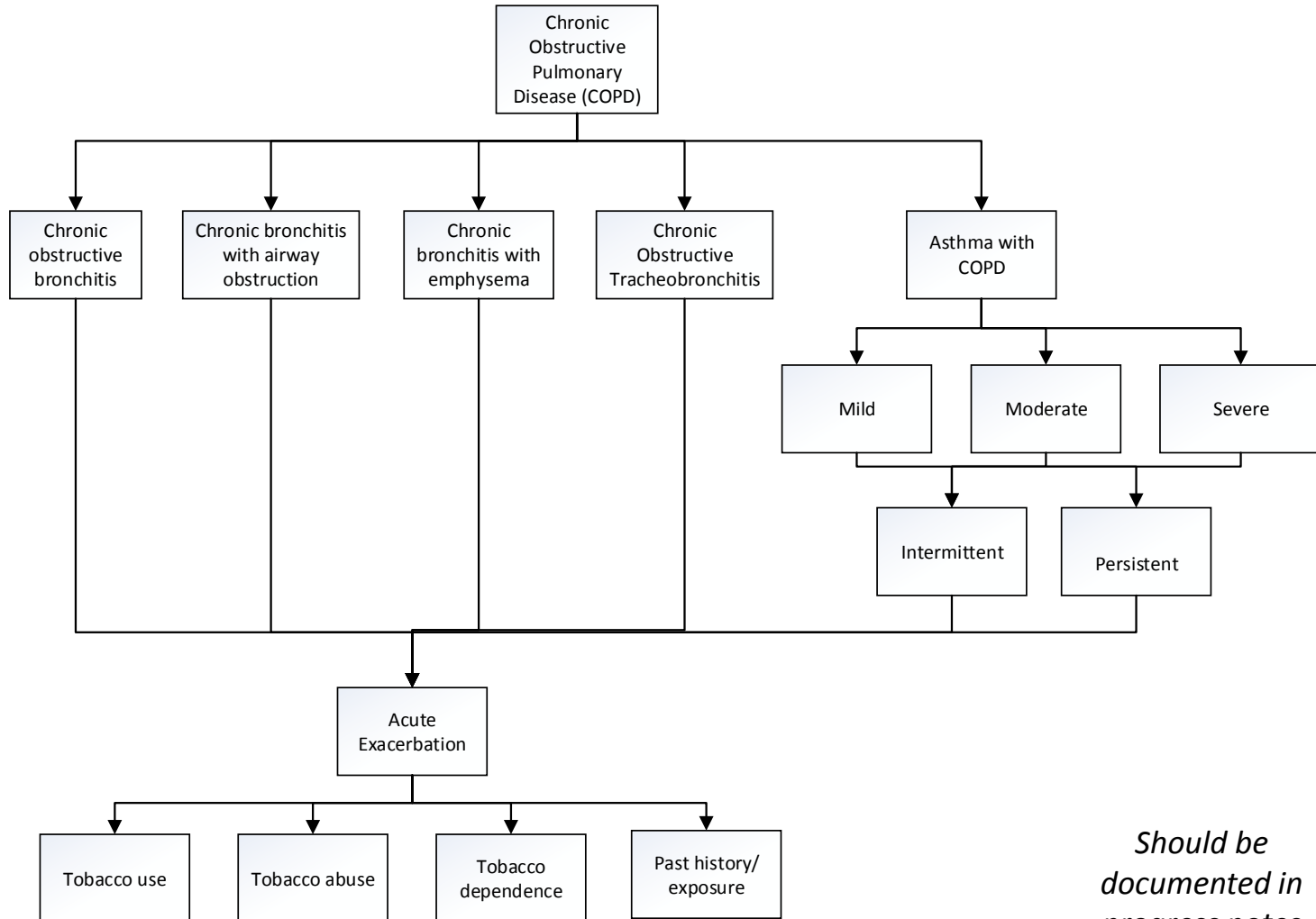
ICD-10 Hint:

- C** Document **causal** agents as clearly as possible
- A** Document the condition as **acute** or chronic
- L** Document **location** with as much specificity as possible
- C** Document the **clinical findings/** indicators to support the diagnosis documented
- S** Document related, **secondary** or causal illness whenever appropriate





COPD Dictation Algorithm



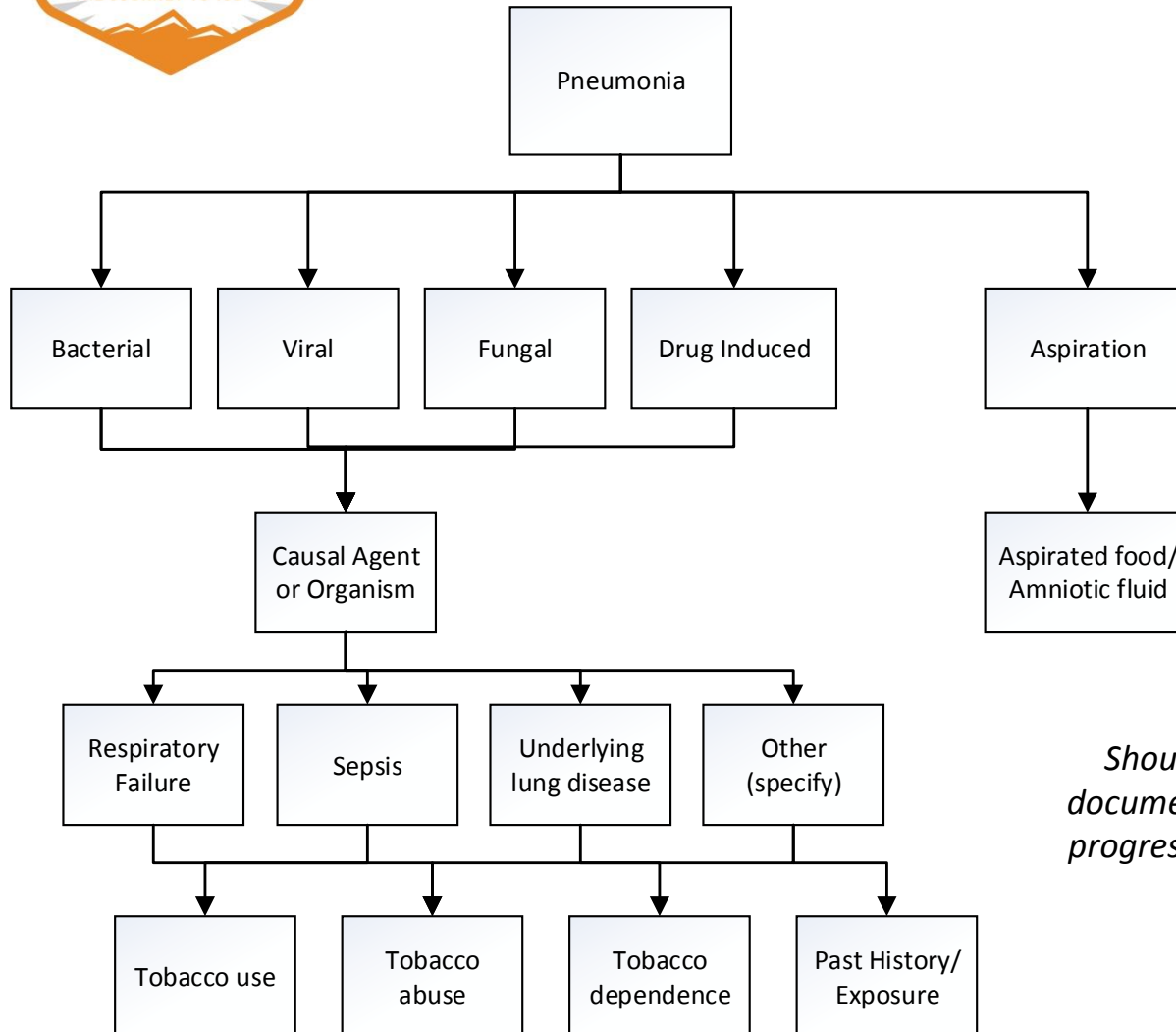
ICD-10 Hint:

- C** Document **causal** agents as clearly as possible
- A** Document the condition as **acute** or chronic
- L** Document **location** with as much specificity as possible
- C** Document the **clinical findings/** indicators to support the diagnosis documented
- S** Document related, **secondary** or causal illness whenever appropriate

Should be documented in progress notes



Pneumonia Dictation Algorithm



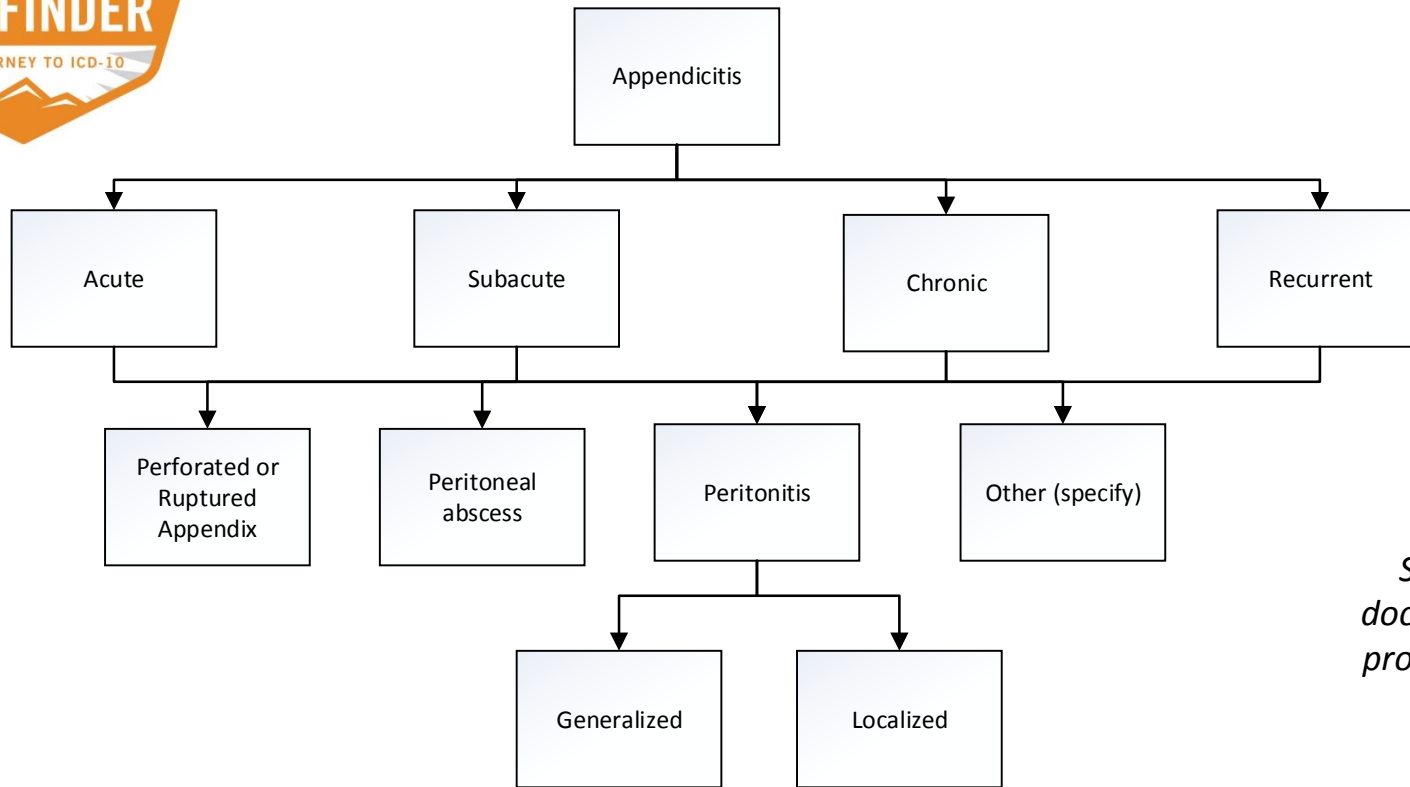
Should be documented in progress notes

ICD-10 Hint:

- C** Document **causal** agents as clearly as possible
- A** Document the condition as **acute** or chronic
- L** Document **location** with as much specificity as possible
- C** Document the **clinical findings/** indicators to support the diagnosis documented
- S** Document related, **secondary** or causal illness whenever appropriate



Appendicitis Dictation Algorithm



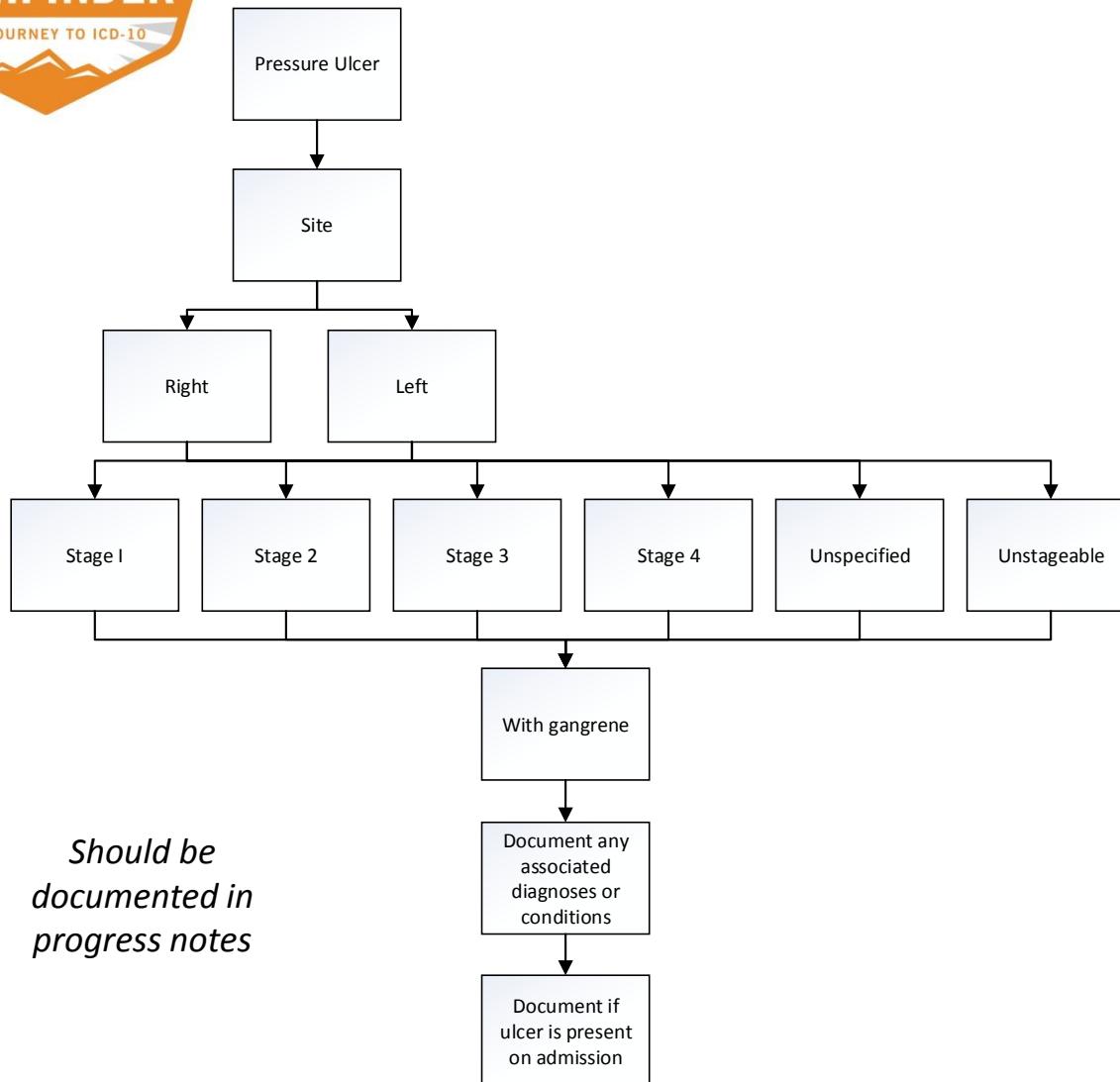
Should be documented in progress notes

ICD-10 Hint:

- C** Document **causal** agents as clearly as possible
- A** Document the condition as **acute** or chronic
- L** Document **location** with as much specificity as possible
- C** Document the **clinical findings**/indicators to support the diagnosis documented
- S** Document related, **secondary** or causal illness whenever appropriate



Pressure Ulcers Dictation Algorithm

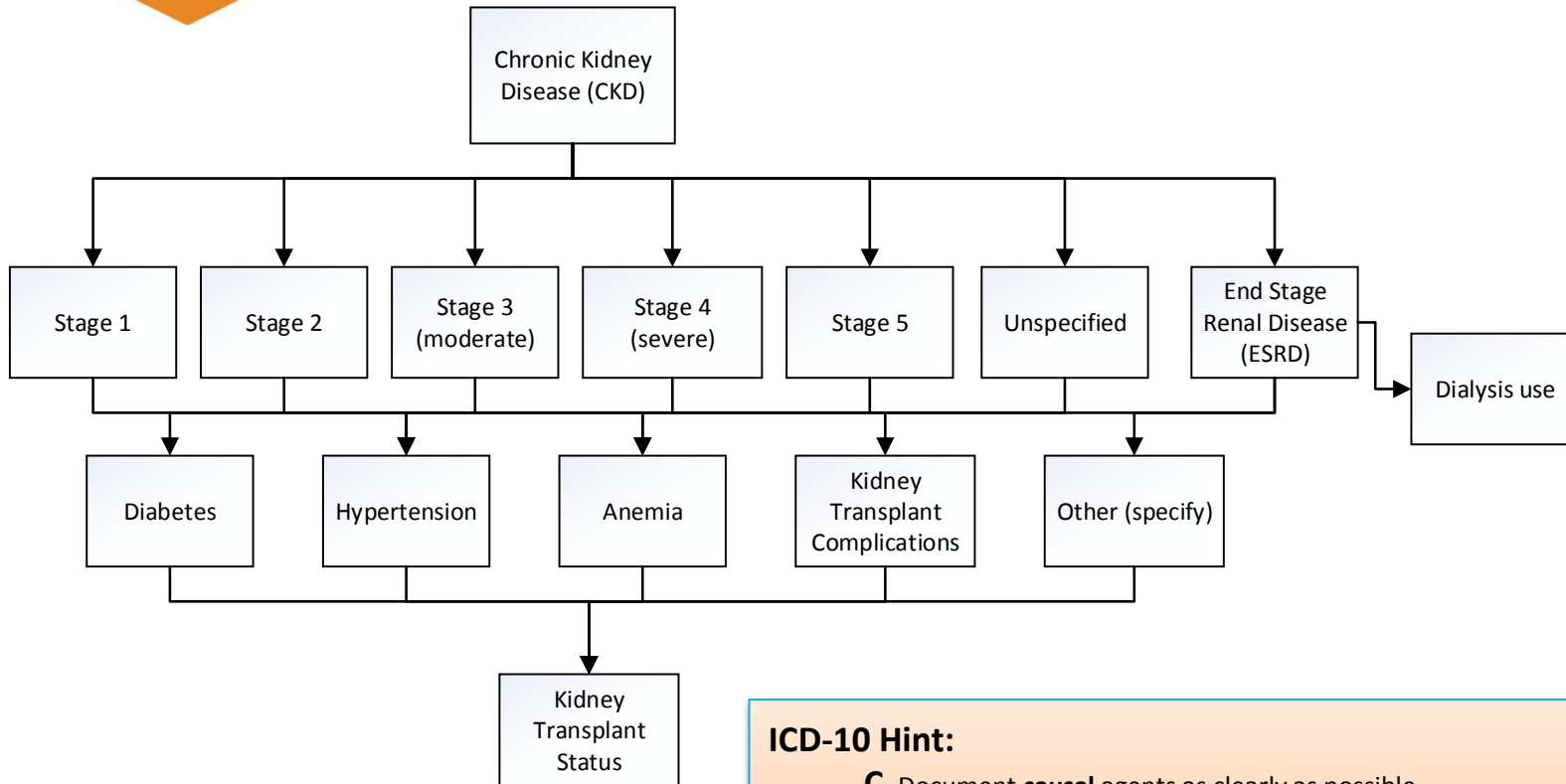


ICD-10 Hint:

- C** Document **causal** agents as clearly as possible
- A** Document the condition as **acute** or **chronic**
- L** Document **location** with as much specificity as possible
- C** Document the **clinical findings/** indicators to support the diagnosis documented
- S** Document related, **secondary** or causal illness whenever appropriate



Chronic Kidney Disease Dictation Algorithm



Should be documented in progress notes

ICD-10 Hint:

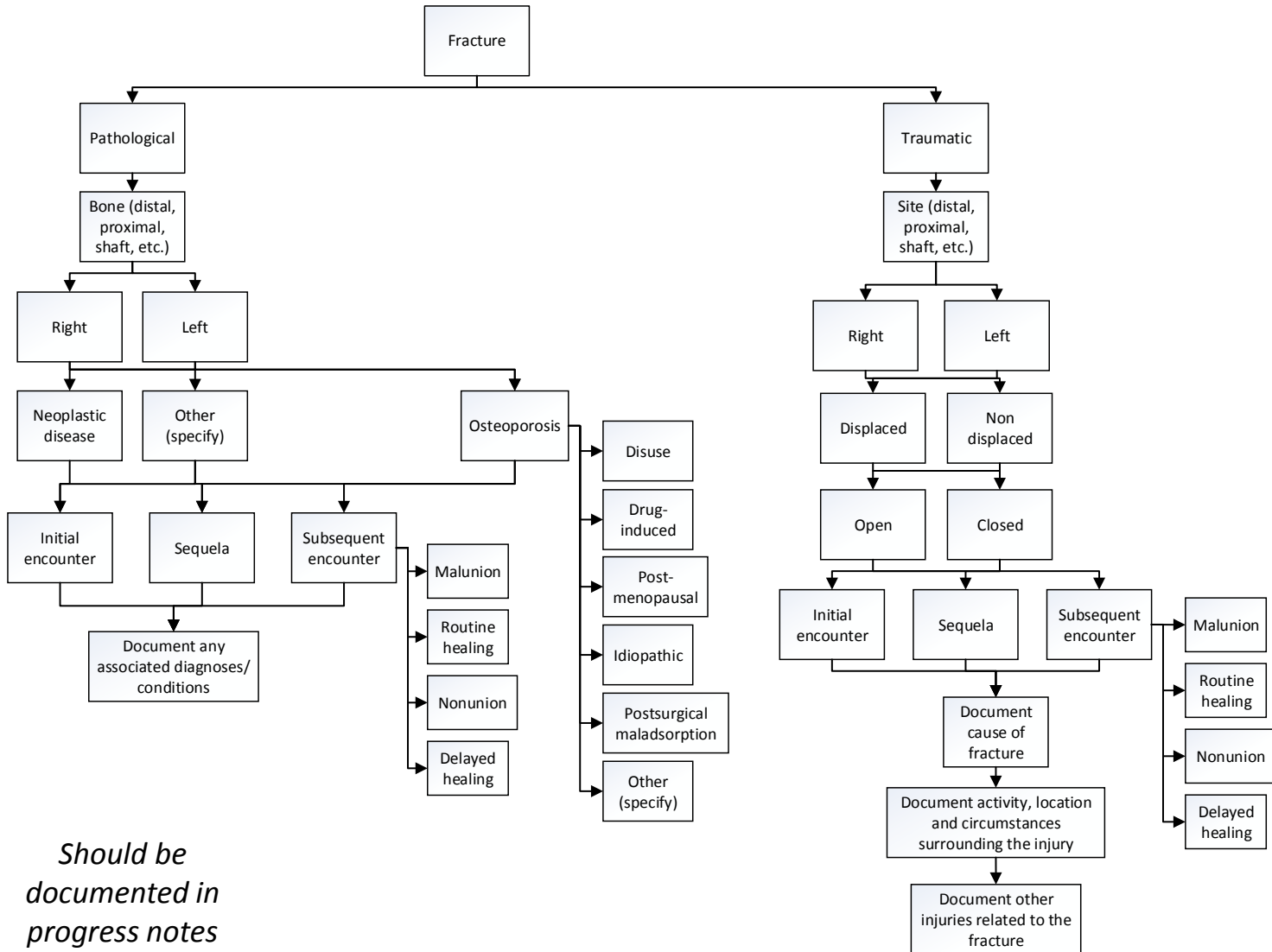
- C** Document **causal** agents as clearly as possible
- A** Document the condition as **acute** or chronic
- L** Document **location** with as much specificity as possible
- C** Document the **clinical findings**/indicators to support the diagnosis documented
- S** Document related, **secondary** or causal illness whenever appropriate



Fractures Dictation Algorithm

ICD-10 Hint:

- C** Document **causal** agents as clearly as possible
- A** Document the condition as **acute** or chronic
- L** Document **location** with as much specificity as possible
- C** Document the **clinical findings/** indicators to support the diagnosis documented
- S** Document related, **secondary** or causal illness whenever appropriate

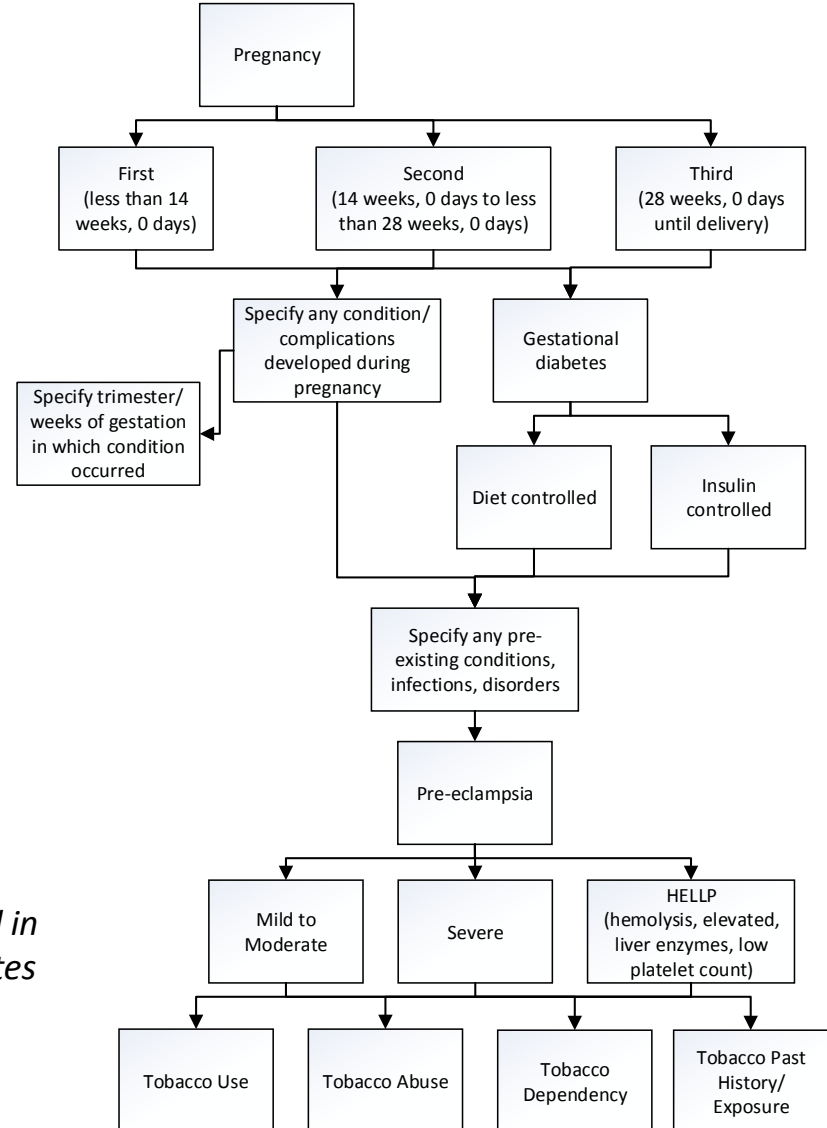




Pregnancy Dictation Algorithm

ICD-10 Hint:

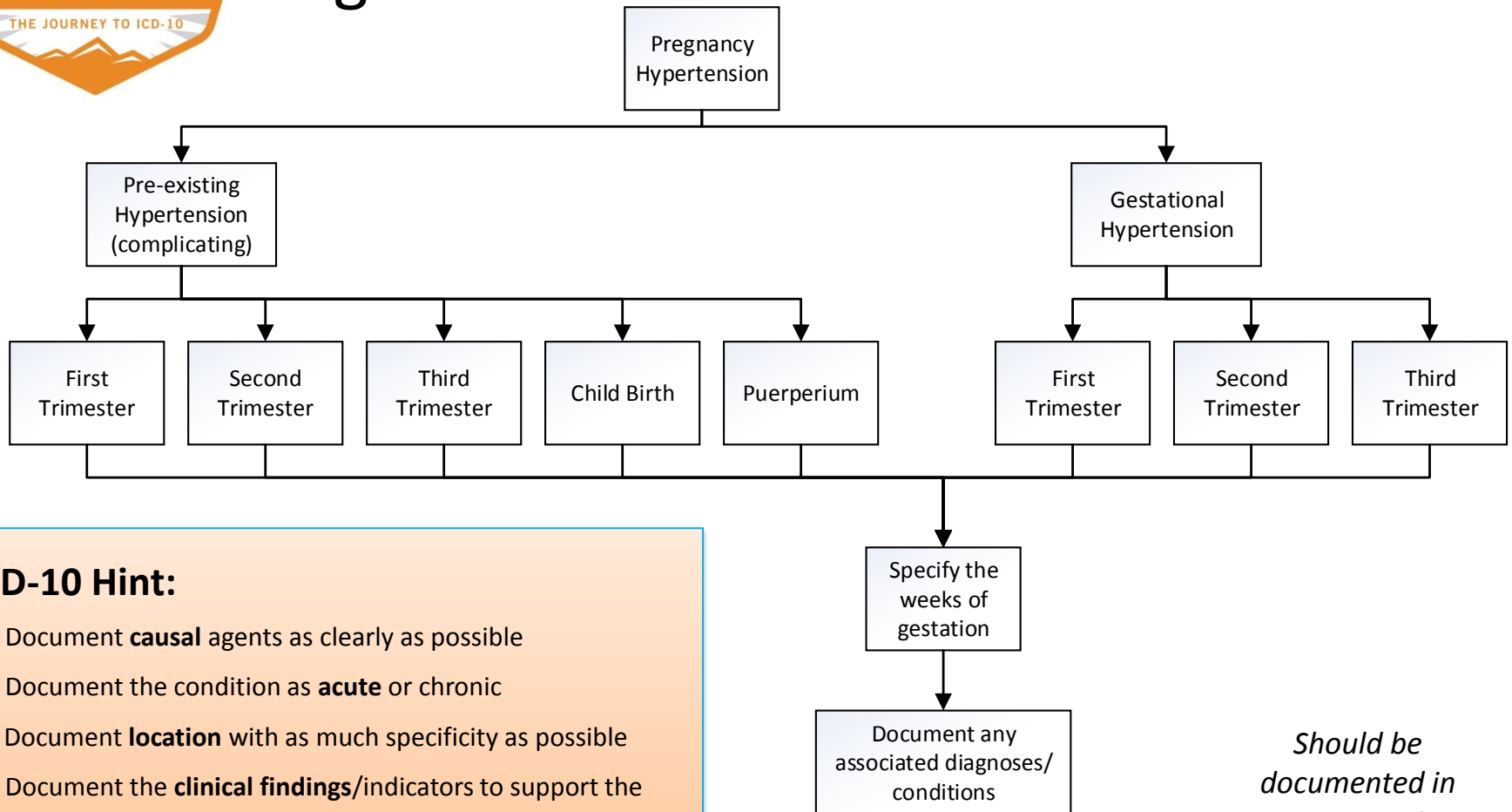
- C** Document **causal** agents as clearly as possible
- A** Document the condition as **acute** or chronic
- L** Document **location** with as much specificity as possible
- C** Document the **clinical findings/** indicators to support the diagnosis documented
- S** Document related, **secondary** or causal illness whenever appropriate



Should be documented in progress notes



Pregnancy Hypertension Dictation Algorithm



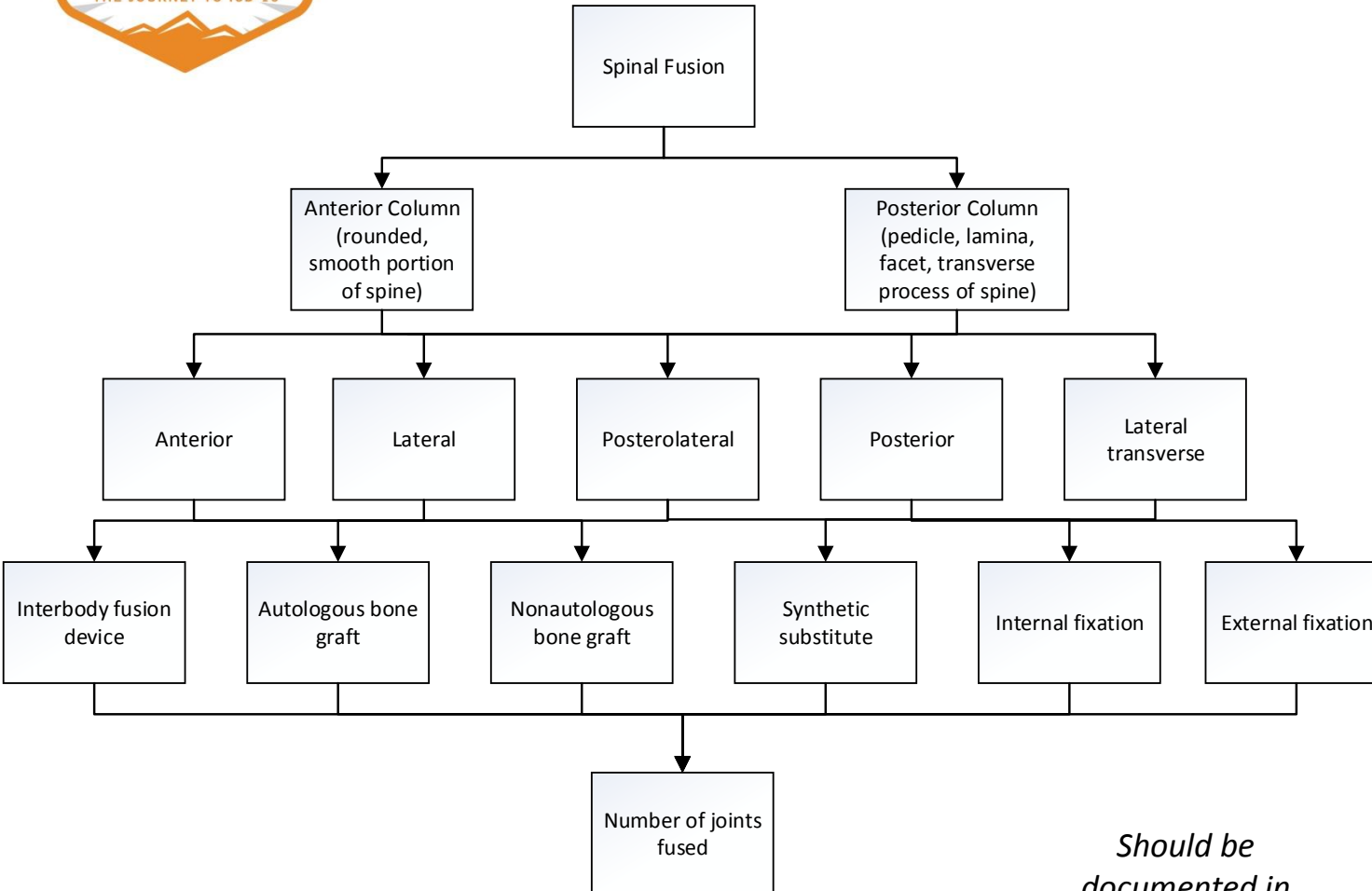
ICD-10 Hint:

- C** Document **causal** agents as clearly as possible
- A** Document the condition as **acute** or chronic
- L** Document **location** with as much specificity as possible
- C** Document the **clinical findings**/indicators to support the diagnosis documented
- S** Document related, **secondary** or causal illness whenever appropriate

Should be documented in progress notes



Spinal Fusion Dictation Algorithm



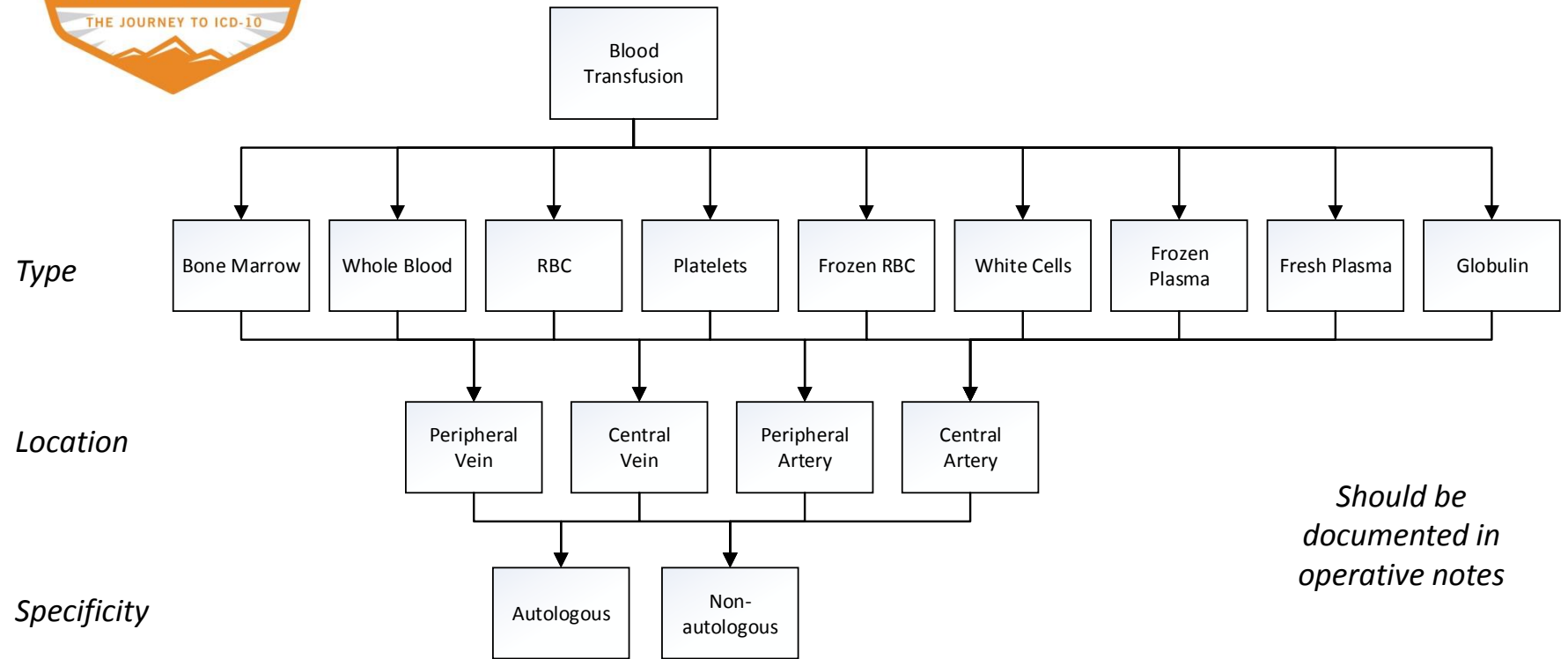
*Should be
documented in
operative notes*

ICD-10 Hint:

- C** Document **causal** agents as clearly as possible
- A** Document the condition as **acute** or **chronic**
- L** Document **location** with as much specificity as possible
- C** Document the **clinical findings/** indicators to support the diagnosis documented
- S** Document related, **secondary** or causal illness whenever appropriate



Blood Transfusion Dictation Algorithm



ICD-10 Hint:

- C** Document **causal** agents as clearly as possible
- A** Document the condition as **acute** or chronic
- L** Document **location** with as much specificity as possible
- C** Document the **clinical findings**/indicators to support the diagnosis documented
- S** Document related, **secondary** or causal illness whenever appropriate